



FOR NEW EQUIPMENT SALES, CALL
800.958.2555
TO SPEAK WITH AN ALTEC REPRESENTATIVE
or visit us online at altec.com

 **Altec**[®]
ARTICULATING TELESCOPIC
AERIAL DEVICE

AH150

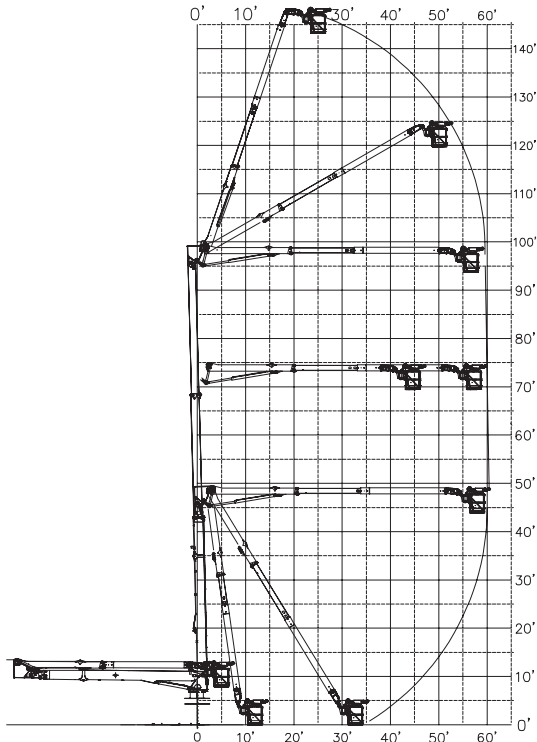
FEATURES

- Articulating and Telescoping Lower and Upper Booms
- 1600 lbs (953 kg) Total Boom-tip Capacity in Any Boom Position
- Aluminum Platform
 - » 1600 lbs (726 kg) 36 x 96 x 42 in
 - » End Mounted Rotating Platform
- Material Handling System
 - » Up to 1000 lbs (454 kg) Capacity in Any Boom Position
 - » Hydraulically Extendible and Articulating Jib
 - » 180° Manually Rotating Jib/Winch Assembly
- Automatic Hydraulic Platform Leveling
- Individual single function controls with safety interlocks
- Category A Upgradeable - Standard Configuration Includes:
 - » Lower Test Electrode / Conductive Shield
 - » Pre-wired for Leakage Monitor
- Two Hydraulic Tool Circuits at Boom Tip
- Outriggers
 - » Rear - Swing Out and Down
 - » Front - Single Stage Out and Down
- Outrigger Boom Interlock System
- Secondary Stowage System
- Outrigger Motion Alarm
- Back-Up Alarm

OPTIONS

- Corona Ring
- Current Leakage Monitor
- Hydraulic Intensifier at Platform
- Fall Protection System
- Outrigger Pads
- Wheel Chocks

REACH DIAGRAM



For more complete information on Altec products and services, visit us on the web at www.altec.com. Material and specifications are subject to change without notice. Featured units in photos may include optional features. Please contact an Altec representative for all available options. Altec® and the Altec logo are registered trademarks of Altec Inc. in the United States and various other countries and may not be used without permission. © 2017 Altec Inc. All Rights Reserved. AIOSAH150-0117-v2

| SPECIFICATIONS | Ground to Bottom of Platform | 145.0 ft (44.2 m) |
|----------------|--|-------------------|
| | Working Height | 150.0 ft (45.7 m) |
| | Maximum Reach From Centerline At Working Height | 60.3 ft (18.4 m) |
| | | 70.2 ft (21.4 m) |
| | Platform Capacity (Aluminum) | 1600 lb (726 kg) |
| | Maximum Jib Capacity | 1000 lb (454 kg) |
| | Maximum Combined Capacity, Platform & Jib | 1600 lb (726 kg) |
| | Lower Boom Articulation | 0 to 87.5° |
| | Lower Boom Telescopic Extension | 49.8 ft (15.2 m) |
| | Upper Boom Articulation | 0 to 160° |
| | Upper Boom Telescopic Extension | 12.7 ft (3.9 m) |
| | Stowed Travel Height | 13.4 ft (4.1 m) |
| | Upper Boom Isolation (Minimum) | 14.2 ft (4.3 m) |
| | Max. Boom Dielectric Rating | 500 kV |
| Rotation | Continuous | |

Recommended safety equipment, available through Altec Supply, include platform liners, fall protection systems, and outrigger pads.

*Based on a chassis frame height of 40 inches (1016 mm) in compliance with ANSI A92.2-2015 Paragraph 6.2.2.3

**HIGH CAPACITY PLATFORM AND JIB
MAXIMIZES PRODUCTIVITY**



**OPTIMIZED BOOM DESIGN COMPLIES
WITH FEDERAL BRIDGE FORMULA ON
FIVE AXLE CHASSIS**



**UNIQUE OUTRIGGER CONFIGURATION
MAXIMIZES STABILITY WITH REDUCED
WEIGHT**



**INDIVIDUAL, SINGLE FUNCTION
CONTROLLERS ALLOW INTUITIVE,
CONFIDENT OPERATION AT HEIGHT**

