

ARTICULATING TELESCOPIC AERIAL DEVICE

AH150



HANNIBAL
CRANE

FOR EQUIPMENT RENTAL CALL HANNIBAL CRANE

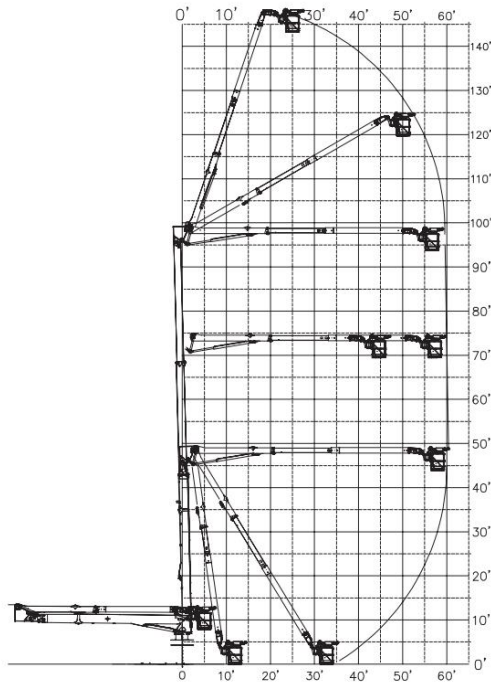
573-406-0105

FEATURES

- Articulating and Telescoping Lower and Upper Booms
- 1600 lbs (953 kg) Total Boom-tip Capacity in Any Boom Position
- Aluminum Platform
 - » 1600 lbs (726 kg) 36 x 96 x 42 in
 - » End Mounted Rotating Platform
- Material Handling System
 - » Up to 1000 lbs (454 kg) Capacity in Any Boom Position
 - » Hydraulically Extendible and Articulating Jib
 - » 180° Manually Rotating Jib/Winch Assembly
- Automatic Hydraulic Platform Leveling
- Individual single function controls with safety interlocks
- Category A Upgradeable - Standard Configuration Includes:
 - » Lower Test Electrode / Conductive Shield
 - » Pre-wired for Leakage Monitor
- Two Hydraulic Tool Circuits at Boom Tip
- Outriggers
 - » Rear - Swing Out and Down
 - » Front - Single Stage Out and Down
- Outrigger Boom Interlock System
- Secondary Stowage System
- Outrigger Motion Alarm
- Back-Up Alarm

SPECIFICATIONS	Ground to Bottom of Platform	145.0 ft (44.2 m)
	Working Height	150.0 ft (45.7 m)
	Maximum Reach From Centerline	60.3 ft (18.4 m)
	At Working Height	70.2 ft (21.4 m)
	Platform Capacity (Aluminum)	1600 lb (726 kg)
	Maximum Jib Capacity	1000 lb (454 kg)
	Maximum Combined Capacity, Platform & Jib	1600 lb (726 kg)
	Lower Boom Articulation	0 to 87.5°
	Lower Boom Telescopic Extension	49.8 ft (15.2 m)
	Upper Boom Articulation	0 to 160°
	Upper Boom Telescopic Extension	12.7 ft (3.9 m)
	Stowed Travel Height	13.4 ft (4.1 m)
	Upper Boom Isolation (Minimum)	14.2 ft (4.3 m)
	Max. Boom Dielectric Rating	500 kV
Rotation	Continuous	

REACH DIAGRAM



HIGH CAPACITY PLATFORM AND JIB MAXIMIZES PRODUCTIVITY



OPTIMIZED BOOM DESIGN COMPLIES WITH FEDERAL BRIDGE FORMULA ON FIVE AXLE CHASSIS



UNIQUE OUTRIGGER CONFIGURATION MAXIMIZES STABILITY WITH REDUCED WEIGHT



INDIVIDUAL, SINGLE FUNCTION CONTROLLERS ALLOW INTUITIVE, CONFIDENT OPERATION AT HEIGHT



7060 Hilltop Parkway
Hannibal, MO 63401

www.hannibalcrane.com

573-406-0105
@816-309-9398
george@hannibalcrane.com
mike@hannibalcrane.com

*Pictures and information taken from Altec AH150 brochure